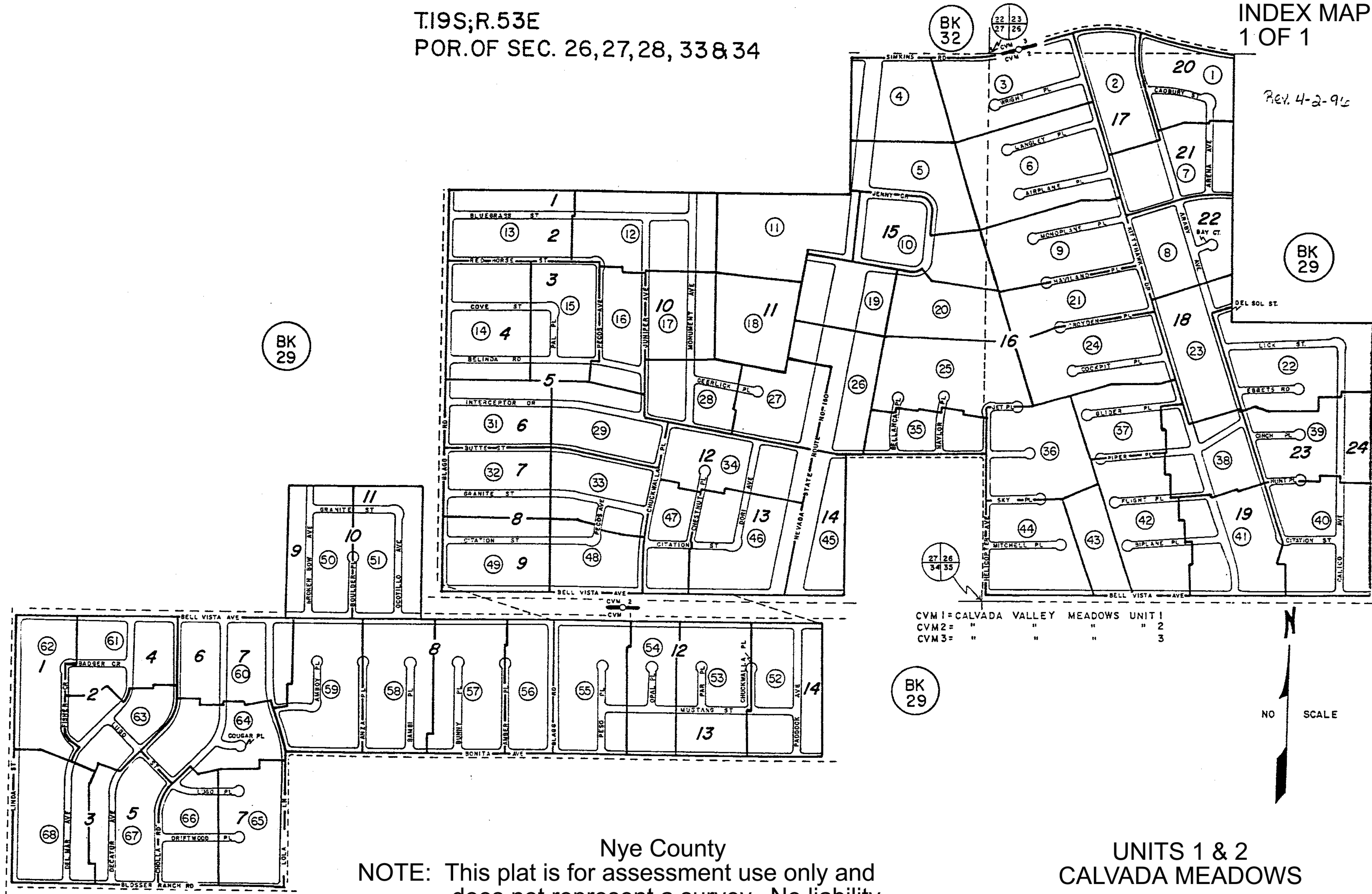
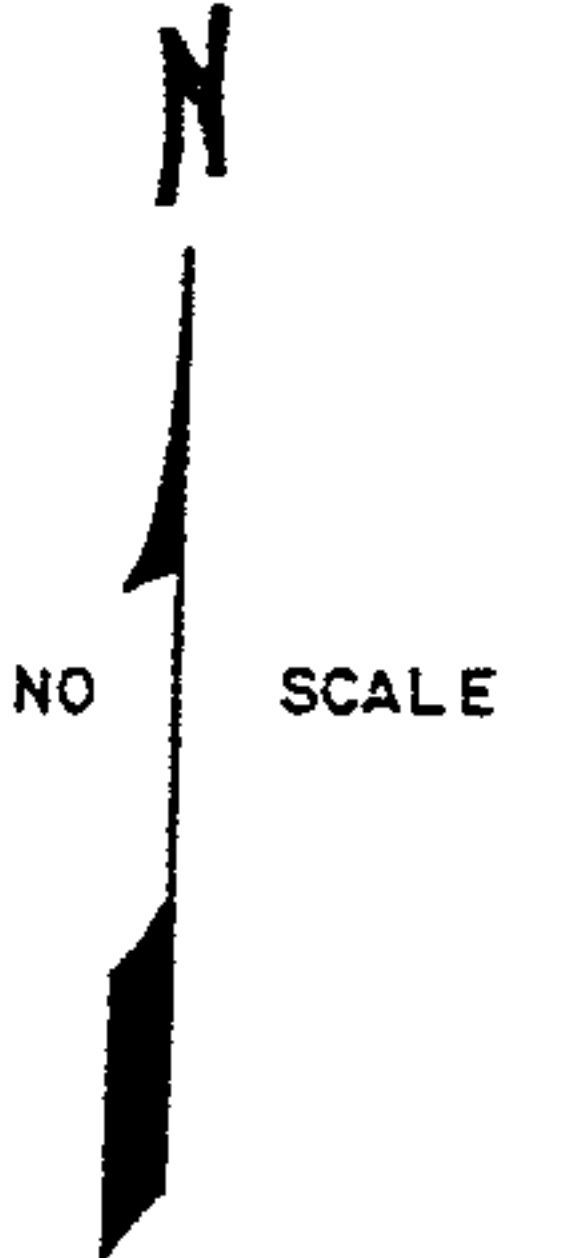


T.19S;R.53E
POR. OF SEC. 26,27,28, 33 & 34

Rev. 4-2-96



CVM 1 = CALVADA VALLEY MEADOWS UNIT 1
 CVM 2 = " " " " 2
 CVM 3 = " " " " 3



Nye County
 NOTE: This plat is for assessment use only and does not represent a survey. No liability is assumed as to the accuracy of the data delineated hereon.

UNITS 1 & 2
 CALVADA MEADOWS

MAR 82/RLW
 NYE CO. ASSESSOR